

CP  
CICAPLUS

Brand-Rex 





GigaPlus is a premium grade cabling system that is characterised to 250MHz. Its performance significantly exceeds the requirements specified in the current versions of the published standards.

10GPLUS

U-MEDIAPLUS

CAT6PLUS

GIGAPLUS

VOICE



**A trusted voice in a world of confusion**

Brand-Rex has developed the enviable position of being Europe's premier, home based provider of 'best in class' communication infrastructure solutions.

This position has been gained through a core philosophy of delivering maximum performance through design excellence.

With a reputation as one of the most respected expert voices within the technical community, Brand-Rex has built a business and product ethos around one word – trust. This high level of knowledge, experience and integrity, gained through three decades of networking deployment, means that whenever Brand-Rex speaks, the industry listens.

## Why GigaPlus

GigaPlus is a high quality European developed product range offering a Gigabit Ethernet solution characterised up to 200Mhz, with over 10 million ports installed worldwide.

When Brand-Rex introduced GigaPlus in 1999, Gigabit Ethernet was held in the same esteem as the recently ratified 10 Gigabit Ethernet standard. A team of engineers developed GigaPlus to offer the market a high performance, ultra reliable solution that would stand up to the demands of the then revolutionary Gigabit Ethernet application. Today Category 5e is a commoditised product, however not all products perform in the same way. With the influx of cheaper systems claiming to support Gigabit

Ethernet applications, customers need the assurance that the system will meet their requirements. GigaPlus from Brand-Rex offers guaranteed performance, that not only meets the requirement of the relevant standard, but offers the comfort of substantial headroom. In the current market GigaPlus represents a sound investment for general office horizontal cabling and residential cabling for networks running Gigabit Ethernet applications.

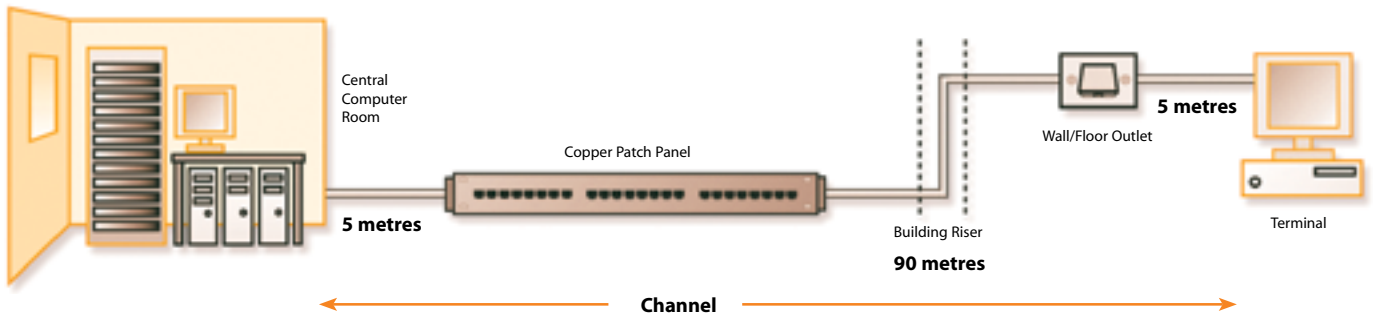
Brand-Rex products are offered through a dedicated channel of partners. All authorised channel partners are trained in the installation of Brand-Rex products and are able to offer the comprehensive 25 year Brand-Rex Channel warranty.

## Features

- Comprehensive product range offering both unshielded and shielded solutions
- Independent 3rd party approvals from 3P, Denmark
- Reduced bit error rate through standards' exceeding headroom
- Proven reliability and performance

## Applications

- General office horizontal cabling
- Industrial cabling
- Residential cabling
- Building management system cabling



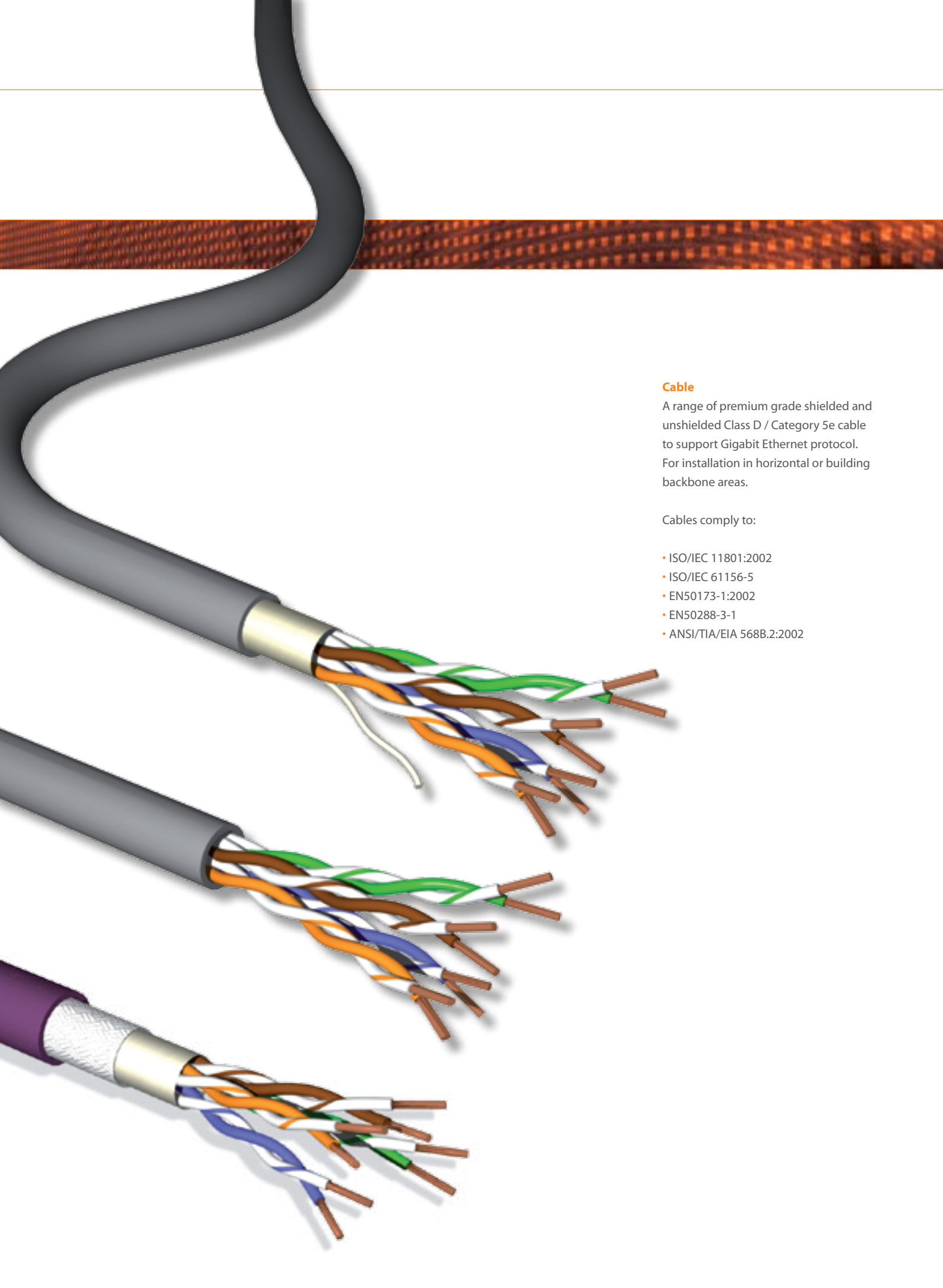
#### 4 Connector Channel Performance

Frequency (MHz)		1	4	10	16	20	31.25	62.5	100	125	155	175	200	250
Attenuation (dB)	Typical	2.0	4.0	6.4	8.1	9.1	11.5	16.6	21.3	24.0	27.0	28.8	31.0	32.5
	Spec	2.3	4.6	7.3	9.3	10.4	13.2	19.1	24.7	na	na	na	na	na
NEXT (dB)	Typical	73.6	62.3	54.9	51.0	49.2	45.5	39.8	35.9	34.0	32.2	31.2	30.1	30.1
	Spec	60.0	53.5	47.0	43.6	42.0	38.7	33.6	30.1	na	na	na	na	na
PSNEXT (dB)	Typical	70.6	59.3	51.9	48.0	46.2	42.5	36.8	32.9	31.0	29.2	28.2	27.1	29.7
	Spec	57.0	50.5	44.0	40.6	39.0	35.7	30.6	27.1	na	na	na	na	na
Return Loss (dB)	Typical	22.0	22.0	22.0	22.0	22.0	20.1	17.1	15.0	14.0	13.1	12.6	12.0	11.8
	Spec	17.0	17.0	17.0	17.0	17.0	15.1	12.1	10.0	na	na	na	na	na
ELFEXT (dB)	Typical	70.0	57.9	50.0	45.9	44.0	40.1	34.1	30.0	28.0	26.2	25.1	24.0	26.4
	Spec	57.4	45.3	45.3	33.3	31.4	27.5	21.5	17.4	na	na	na	na	na
PSELFEXT (dB)	Typical	67.0	54.9	47.0	42.9	41.0	37.1	31.1	27.0	25.0	23.2	22.1	21.0	24.6
	Spec	54.4	54.4	37.4	30.3	28.4	24.5	18.5	14.4	na	na	na	na	na
Propagation Delay (ns)	Typical	520	510	505	503	502	501	500	500	500	500	500	500	505
	Spec	<555	<555	<555	<555	<555	<555	<555	<555	na	na	na	na	na
Delay Skew (ns)	Typical	<20	<20	<20	<20	<20	<20	<20	<20	<20	<20	<20	<20	<20
	Spec	<50	<50	<50	<50	<50	<50	<50	<50	na	na	na	na	na
ACR (dB/100m)	Typical	71.6	58.3	48.5	42.9	40.0	34.0	23.2	14.6	10.0	5.2	2.4	-0.9	-0.8
PSACR (dB/100m)	Typical	68.6	55.3	45.5	39.9	37.0	31.0	20.2	11.6	7.0	2.2	-0.6	-3.9	-1.5
Alien NEXT (dB)	Typical	103.6	92.3	84.9	81.0	79.2	75.5	69.8	65.9	64.0	62.2	61.2	60.1	59.2



### **The GigaPlus System**

Structured cabling systems comprised of GigaPlus cables, patch cords and connectivity are designed to be compliant with the current sets of Class D / Category 5e published standards requirements as an absolute minimum. The systems support all protocols defined in current editions, and amendments, of ISO 11801 : 2002, ANSI TIA/EIA 568B.2 : 2002 and EN50173-1-1 : 2002 (including IEEE802.3ab Gigabit Ethernet) and are fully backward compatible.



### Cable

A range of premium grade shielded and unshielded Class D / Category 5e cable to support Gigabit Ethernet protocol. For installation in horizontal or building backbone areas.

Cables comply to:

- ISO/IEC 11801:2002
- ISO/IEC 61156-5
- EN50173-1:2002
- EN50288-3-1
- ANSI/TIA/EIA 568B.2:2002



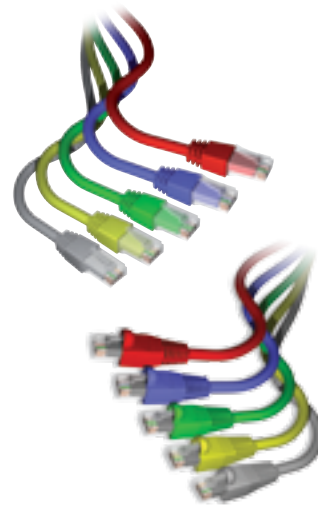
#### Outlets and Snap-In-Jacks

GigaPlus shielded and unshielded outlets offer independently verified Class D / Category 5e component performance. The outlets are compatible with all Brand-Rex UK and Continental style faceplates, floorboxes and modules. All feature a Universal IDC punchdown block.



#### Patch Panels

A range of 19" rack mounted patch panels offering true Class D / Category 5e component performance. Available with or without integral cable management, and with LSA, 110 or Universal IDC punchdown blocks. All outlets are numerically identified with an additional writeable surface for ease of port naming.



#### Patch Cords

All Brand-Rex patch cords employ independently verified Class D / Category 5e cable, and are manufactured using leading brand, standards' compliant, RJ-45 modular plugs. GigaPlus patch cords are available in shielded or unshielded construction and with stranded or solid core. Our factory-made and tested patch cords offer you guaranteed quality and ensures your system avoids the performance degradation that maybe experienced when inferior patch cords are used.

## Category 5e Cables

	PVC	LSOH - HF1	LSOH - HF3
U/UTP, 100 $\Omega$ , 4x2xAWG 24/1 Cable	GPU	GPU - HF1	GPU - HF3
F/UTP, 100 $\Omega$ , 4x2xAWG 24/1 Cable	GPF	GPF - HF1	GPF - HF3
SF/UTP, 100 $\Omega$ , 4x2xAWG 24/1 Cable	GPS	GPS - HF1	GPS - HF3

## Availability

305m Box	500m Box	500m Reel	1000m Reel
✓	✓	✓	✓
-	✓	✓	✓
-	-	✓	✓

## Category 5e Patch Panels

	16 Port	24 Port	32 Port	48 Port
Unshielded Panel Universal IDC - Black	GPCPNU16002	GPCPNU24002	GPCPNU32002	GPCPNU48002
Unshielded Panel Universal IDC - Grey	GPCPNU16008	GPCPNU24008	GPCPNU32008	GPCPNU48008
Unshielded Panel LSA Style - Black	GPCPNU160K2M	GPCPNU240K2M	-	-
Unshielded Panel LSA Style - Grey	GPCPNU160K8M	GPCPNU240K8M	-	-
Unshielded Panel 110 Style - Black	GPCPNU16012M	GPCPNU24012M	-	-
Unshielded Panel 110 Style - Grey	GPCPNU16018M	GPCPNU24018M	-	-
Shielded Panel LSA Style - Black	GPCPNLF160K2M	GPCPNLF240K2M	-	-
Shielded Panel LSA Style - Grey Shielded	GPCPNLF160K8M	GPCPNLF240K8M	-	-
Panel 110 Style - Black	GPCPNLF16012M	GPCPNLF24012M	-	-
Shielded Panel 110 Style - Grey	GPCPNLF16018M	GPCPNLF24018M	-	-

## Category 5e Patch Cords

	Red	Blue	Green	Yellow	Grey
24 AWG U/UTP - 1.0m	GPCPCU010-111HB	GPCPCU010-444HB	GPCPCU010-555HB	GPCPCU010-666HB	GPCPCU010-888HB
24 AWG U/UTP - 2.0m	GPCPCU020-111HB	GPCPCU020-444HB	GPCPCU020-555HB	GPCPCU020-666HB	GPCPCU020-888HB
24 AWG U/UTP - 3.0m	GPCPCU030-111HB	GPCPCU030-444HB	GPCPCU030-555HB	GPCPCU030-666HB	GPCPCU030-888HB
24 AWG U/UTP - 5.0m	GPCPCU050-111HB	GPCPCU050-444HB	GPCPCU050-555HB	GPCPCU050-666HB	GPCPCU050-888HB
26 AWG F/UTP - 1.0m	GPCPCF010-111H	GPCPCF010-444H	GPCPCF010-555H	GPCPCF010-666H	GPCPCF010-888H
26 AWG F/UTP - 2.0m	GPCPCF020-111H	GPCPCF020-444H	GPCPCF020-555H	GPCPCF020-666H	GPCPCF020-888H
26 AWG F/UTP - 3.0m	GPCPCF030-111H	GPCPCF030-444H	GPCPCF030-555H	GPCPCF030-666H	GPCPCF030-888H
26 AWG F/UTP - 5.0m	GPCPCF050-111H	GPCPCF050-444H	GPCPCF050-555H	GPCPCF050-666H	GPCPCF050-888H
26 AWG SF/UTP - 1.0m	GPCPCS010-111H	GPCPCS010-444H	GPCPCS010-555H	GPCPCS010-666H	GPCPCS010-888H
26 AWG SF/UTP - 2.0m	GPCPCS020-111H	GPCPCS020-444H	GPCPCS020-555H	GPCPCS020-666H	GPCPCS020-888H
26 AWG SF/UTP - 3.0m	GPCPCS030-111H	GPCPCS030-444H	GPCPCS030-555H	GPCPCS030-666H	GPCPCS030-888H
26 AWG SF/UTP - 5.0m	GPCPCS050-111H	GPCPCS050-444H	GPCPCS050-555H	GPCPCS050-666H	GPCPCS050-888H

## Category 5e Snap-In-Jacks

	Unshielded	Shielded
Snap-In-Jack LSA Style - Black	GPCJAKU0K2	GPCJAKF0K2
Snap-In-Jack LSA Style - White	GPCJAKU0K3	-
Snap-In-Jack 110 Style - Black	GPCJAKU012	GPCJAKF012
Snap-In-Jack 110 Style - White	GPCJAKU013	-
Lead Frame Snap-In-Jack 110 Style - Black	GPCJAKU012LF	GPCJAKF012LF
Lead Frame Snap-In-Jack 110 Style - White	GPCJAKU013LF	GPCJAKF013LF

## Category 5e Outlets

	Unshielded	Shielded
50mm x 25mm Shuttered Module - White	GPCSL062UB03	GPCSL062SB03
50mm x 25mm Shuttered Module - Black	GPCSL062UB02	GPCSL062SB02
38mm x 25mm Shuttered Module - White	GPCSL06CU03	GPCSL06CSB03
38mm x 25mm Shuttered Module - Black	GPCSL06CU02	GPCSL06CSB02
50mm x 25mm Angled Shuttered Module - White	GPCSLA62UB03	GPCSLA62SB03
50mm x 25mm Angled Shuttered Module - Black	GPCSLA62UB02	GPCSLA62SB02

## Outlets and Accessories

	White
25 x 50mm Shuttered Faceplate Module	MMCWDOUNI062
25 x 38mm Shuttered Floorbox Module	MMCWDO06C001
25 x 38mm Angled Floorbox Shuttered Module	MMCANG06C3
25 x 50mm Faceplate Blank	MMCWDOUNI042
25 x 38mm Floorbox Blank	MMCBLK06C001
50 x 50mm Faceplate Blank	MMCWDOUNI040
12.5 x 50mm Faceplate Blank	MMCWDOUNI052
86 x 86mm Single Port Shuttered Faceplate	MMCWDOUNI070
86 x 86mm Double Port Shuttered Faceplate	MMCWDOUNI071
86 x 86mm Single Gang Modular Faceplate	MMCWDOUNI030
86 x 147mm Double Gang Modular Faceplate	MMCWDOUNI031
32mm Deep, Single Gang Backbox	MMCSGBB32001
44mm Deep, Single Gang Backbox	MMCSGBB44001
32mm Deep, Double Gang Backbox	MMCDGBB32002
44mm Deep, Double Gang Backbox	MMCDGBB44002

**25 YEAR  
SYSTEM WARRANTY**  
Available for complete structured cabling  
systems when installed by an authorised  
Brand-Rex partner. Systems must include  
Brand-Rex cable, panels, outlets & patch cords.

10GPLUS

U-MEDIAPLUS

CAT6PLUS

GIGAPLUS

VOICE

**brand-rex italy**  
via giovanni da udine, 34  
20156 milano  
italy

**tel:** +39 02 3809 3271  
**fax:** +39 02 3809 3275  
**web:** www.brand-rex.com

**brand-rex portugal**  
lagoas park edificio 8 – piso 0  
2740-244 porto salvo  
portugal

**tel:** +351 21 421 4133  
**fax:** +351 21 421 4135  
**web:** www.brand-rex.com

**brand-rex spain**  
avenida de la vega, 1  
edificio 3. planta 2. oficina 11  
28108 alcobendas  
madrid  
spain

**tel:** +34 914 905 919  
**fax:** +34 916 573 331  
**web:** www.brand-rex.com

**brand-rex germany**  
bunsenstrasse 5  
D-51647  
gummersbach  
germany

**tel:** +49 (0) 2261 814176  
**fax:** +49 (0) 2261 807036  
**web:** www.brand-rex.com

**brand-rex central  
& eastern europe**  
millennium tower  
handelskai 94-96  
A - 1200 wien  
austria

**tel:** +431 24027 510  
**fax:** +431 24027 66510  
**web:** www.brand-rex.com

**brand-rex nordic**  
månskensvägen 14A  
44340 gråbo  
sweden

**tel:** +46 (0) 8 604 8188  
**fax:** +46 (0) 8 604 8188  
**web:** www.brand-rex.com



**brand-rex IMEA**  
PO box 123908  
M-3 mezzanine floor  
sheikha sana building  
sheikh zayed road  
al wasl, dubai

**tel:** +971 4 321 7525  
**fax:** +971 4 321 7535  
**web:** www.brand-rex.com

**brand-rex asia pacific**  
17/F Prosperity Centre  
77-81 Container Port Road  
Kwai Chung  
NT  
Hong Kong

**tel:** (852) 3620 2603  
**fax:** (852) 3621 0018  
**web:** www.brand-rex.com

**brand-rex france**  
120, rue Jean Jaurès  
92 300 levallois perret  
france

**tel:** +33 (0) 1 70 98 78 25  
**fax:** +33 (0) 1 70 98 78 36  
**web:** www.brand-rex.com

**brand-rex london**  
72 cannon street  
london  
EC4N 6AE  
united kingdom

**tel:** +44 (0) 207 489 7631  
**fax:** +44 (0) 207 113 2239  
**web:** www.brand-rex.com

**brand-rex head office**  
viewfield industrial estate  
glenrothes, fife  
KY6 2RS  
united kingdom

**tel:** +44 (0) 1592 772124  
**fax:** +44 (0) 1592 775314  
**web:** www.brand-rex.com