

C6
CAT6PLUS

Brand-Rex 



Cat6Plus is a premium grade cabling system that is characterised to 550MHz and its performance significantly exceeds the requirements of the Class E/Category 6 standards

10GPLUS

U-MEDIAPLUS

CAT6PLUS

GIGAPLUS

VOICE



A trusted voice in a world of confusion

Brand-Rex has developed the enviable position of being Europe's premier, home based provider of 'best in class' communication infrastructure solutions.

This position has been gained through a core philosophy of delivering maximum performance through design excellence.

With a reputation as one of the most respected expert voices within the technical community, Brand-Rex has built a business and product ethos around one word – trust. This high level of knowledge, experience and integrity, gained through three decades of networking deployment, means that whenever Brand-Rex speaks, the industry listens.

Why Cat6Plus

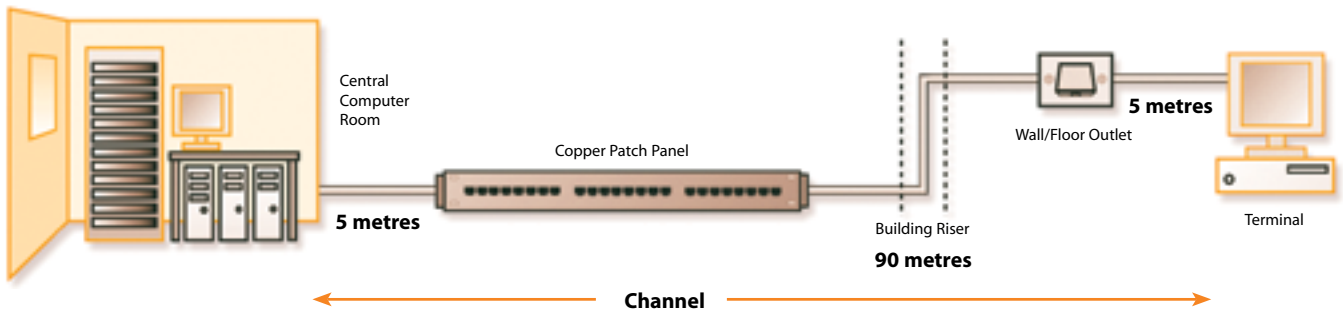
Cat6Plus is probably the best performing Category 6 / Class E cabling solution on the market today. Cat6Plus has rapidly become the preferred choice of global businesses seeking superior performance and reliability from their communications infrastructure. The Cat6Plus solution has been engineered deliver a standards' exceeding, stable platform for Gigabit Ethernet applications. In addition, Cat6Plus offers a solution for 10 Gigabit Ethernet over 30m link distances.

Features

- Comprehensive product range offering both unshielded and shielded solutions
- Independent 3rd party approvals from 3P, Denmark
- Reduced bit error rate through standards' exceeding headroom
- Patented component designs
- Flexible, lightweight cable design

Applications

- General Office Horizontal Cabling
- Bandwidth Intensive Data Network Cabling
- Data Centre Cabling
- Consolidation Point / Server Room Cabling
- Industrial Cabling



4 Connector Channel Performance

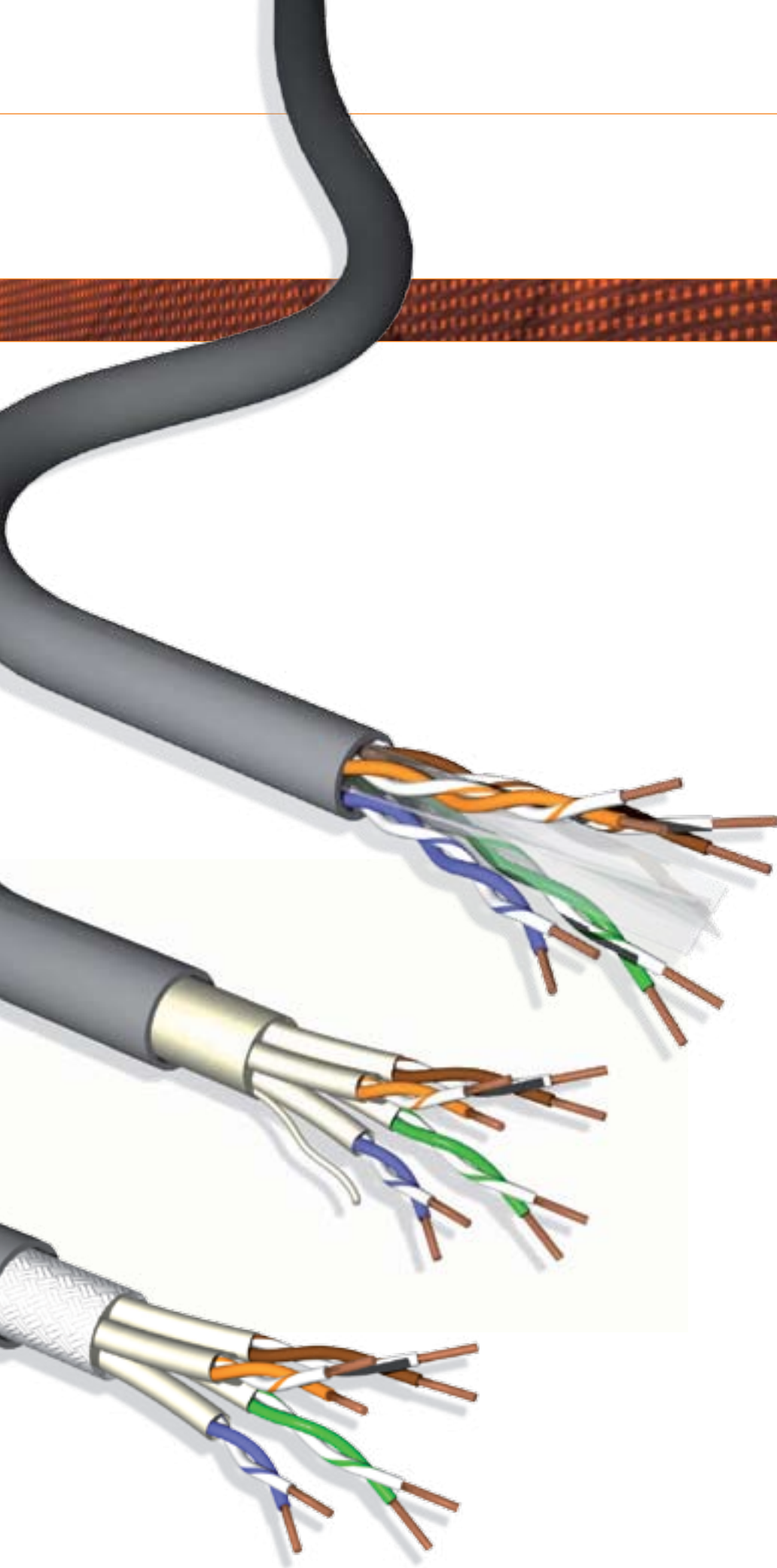
Frequency (MHz)		1	4	10	16	20	31.25	62.5	100	125	155	175	200	250	350	500	550
Attenuation (dB)	Typical	1.9	3.5	5.5	7.0	7.8	9.8	14.2	18.4	20.8	23.4	25.0	27.0	30.6	37.2	45.9	48.6
	Spec	2.1	4.0	6.3	8.0	9.0	11.4	16.5	21.3	24.1	27.2	29.2	31.5	35.9			
NEXT (dB)	Typical	80.7	71.0	64.6	61.2	59.6	56.4	51.4	47.9	46.3	44.7	43.8	42.8	41.1	35.6	32.9	32.2
	Spec	65.0	63.0	56.6	53.2	51.6	48.4	43.4	39.9	38.3	36.7	35.8	34.8	33.1			
PSNEXT (dB)	Typical	78.6	68.8	62.3	58.9	57.2	54.0	48.8	45.3	43.6	42.0	41.1	40.1	38.3	32.8	30.0	29.3
	Spec	62.0	60.5	54.0	50.6	49.0	45.7	40.6	37.1	35.4	33.8	32.9	31.9	30.2			
Return Loss (dB)	Typical	28.0	25.0	23.0	22.0	21.5	20.5	19.0	18.0	17.5	17.0	16.8	16.5	16.0	15.3	14.5	14.3
	Spec	19.0	19.0	19.0	18.0	17.5	16.5	14.0	12.0	11.0	10.1	9.6	9.0	8.0			
ELFEXT (dB)	Typical	78.3	66.2	58.3	54.2	52.2	48.4	42.3	38.3	36.3	34.5	33.4	32.2	30.3	22.4	19.3	18.4
	Spec	63.3	51.2	43.3	39.2	37.2	33.4	27.3	23.3	21.3	19.5	18.4	17.2	15.3			
PSELFEXT (dB)	Typical	75.3	63.2	55.3	51.2	49.2	45.4	39.3	35.3	33.3	31.5	30.4	29.2	27.3	19.4	16.3	15.4
	Spec	60.3	48.2	40.3	36.2	34.2	30.4	24.3	20.3	18.3	16.5	15.4	14.2	12.3			
Propagation Delay (ns)	Typical	520	505	500	500	500	500	500	500	500	500	500	500	500	500	500	500
	Spec	580	562	555	553	552	550	549	548	547	547	547	547	546			
Delay Skew (ns)	Typical	<30	<30	<30	<30	<30	<30	<30	<30	<30	<30	<30	<30	<30	<30	<30	<30
	Spec	<50	<50	<50	<50	<50	<50	<50	<50	<50	<50	<50	<50	<50			
ACR (dB)	Typical	78.8	67.6	59.1	54.3	51.8	46.6	37.2	29.6	25.5	21.3	18.7	15.8	10.5	-1.6	-13.1	-16.5
	Spec	62.9	59.0	50.2	45.2	42.6	37.0	26.9	18.6	14.2	9.51	6.6	3.3	-2.8			
PSACR (dB)	Typical	76.7	65.3	56.8	51.9	49.4	44.1	34.6	26.9	22.9	8.6	16.0	13.1	7.7	-4.5	-15.9	-19.4
	Spec	59.9	56.5	47.7	42.6	39.9	34.3	24.1	15.8	11.3	6.6	3.7	0.3	-5.8			



The Cat6Plus System

The Cat6Plus system is comprised of cables, patch leads and connectivity designed to be compliant with the current sets of Class E / Category 6 published and draft standards requirements as an absolute minimum.

The systems support all protocols defined in current editions, and amendments, of ISO 11801:2002, ANSI/TIA/EIA 568B.2.1 : 2002 and EN50173-1:2002 (including IEEE802.3ab Gigabit Ethernet) and are fully backward compatible.



Cables

A range of premium grade shielded and unshielded Class E / Category 6 cable to support Gigabit Ethernet protocol. For installation in horizontal or building backbone areas.

Cables comply to:

- ISO/IEC 11801:2002
- ISO/IEC 61156-5
- EN50173-1:2002
- EN50288-6-1
- ANSI/TIA/EIA 568B.2.1:2002



Outlets and Snap-In-Jacks

Cat6Plus shielded and unshielded snap-in-jacks offer independently verified Class E / Category 6 component performance. The jacks are compatible with all Brand-Rex UK and Continental style faceplates, floorboxes and modules. Cat6Plus jacks are available with either LSA (shielded) or 110 (unshielded) style IDC punchdown blocks.



Patch Panels

A range of 19" rack mounted patch panels offering true Class E / Category 6 component performance. The Cat6Plus panels are supplied with built in cable management / strain relief at the rear of the panel. All outlets are numerically identified with an additional writeable surface for ease of port naming.



Patch Cords

All Brand-Rex patch cords employ independently verified Class E / Category 6 cable, and are manufactured using leading brand standards' compliant RJ-45 modular plugs. Cat6Plus patch cords are available in shielded or unshielded construction and with stranded or solid core. A blade patch cord option is available for high density patching applications. Our factory-made and tested patch cords offer you guaranteed quality and ensures your system avoids the performance degradation that maybe experienced when inferior patch cords are used.

Category 6 Cable

	PVC	LSOH - HF1	LSOH - HF3
U/UTP, 100 Ω, 4x2xAWG 23/1 Cable	C6U	C6U - HF1	C6U - HF3
U/FTP, 100 Ω, 4x2xAWG 23/1 Cable	C6U/FTP	C6U/FTP - HF1	C6U/FTP - HF3
F/FTP, 100 Ω, 4x2xAWG 23/1 Cable	C6F/FTP	C6F/FTP - HF1	C6F/FTP - HF3
S/FTP, 100 Ω, 4x2xAWG 23/1 Cable	C6STP	C6STP - HF1	C6STP - HF3

Availability

305m Box	500m Box	500m Reel	1000m Reel
✓	-	✓	✓
-	-	✓	✓
-	-	✓	✓
-	-	✓	✓

Category 6 Patch Panels

	16 Port	24 Port
Unshielded Panel LSA Style - Black	C6CPNLU160K2M	C6CPNLU240K2M
Unshielded Panel LSA Style - Grey	C6CPNLU160K8M	C6CPNLU240K8M
Unshielded Panel 110 Style - Black	C6CPNLU16012M	C6CPNLU24012M
Unshielded Panel 110 Style - Grey	C6CPNLU16018M	C6CPNLU24018M
Shielded Panel LSA Style - Black	C6CPNLF160K2M	C6CPNLF240K2M
Shielded Panel LSA Style - Grey	C6CPNLF160K8M	C6CPNLF240K8M

Category 6 Snap-In-Jacks

	Unshielded	Shielded
Snap-In-Jack LSA Style - Black	C6JAKU0K2	C6JAKF0K2
Snap-In-Jack LSA Style - White	C6JAKU0K3	-
Snap-In-Jack 110 Style - Black	C6JAKU012	-
Snap-In-Jack 110 Style - White	C6JAKU013	-

Outlets and Accessories

	White
25 x 50mm Shuttered Faceplate Module	MMCWDOUNI062
25 x 38mm Shuttered Floorbox Module	MMCWDO06C001
25 x 38mm Angled Floorbox Shuttered Module	MMCANG06C3
25 x 50mm Faceplate Blank	MMCWDOUNI042
25 x 38mm Floorbox Blank	MMCBLK06C001
50 x 50mm Faceplate Blank	MMCWDOUNI040
12.5 x 50mm Faceplate Blank	MMCWDOUNI052
86 x 86mm Single Port Shuttered Faceplate	MMCWDOUNI070
86 x 86mm Double Port Shuttered Faceplate	MMCWDOUNI071
86 x 86mm Single Gang Modular Faceplate	MMCWDOUNI030
86 x 147mm Double Gang Modular Faceplate	MMCWDOUNI031
32mm Deep, Single Gang Backbox	MMCSGBB32001
44mm Deep, Single Gang Backbox	MMCSGBB44001
32mm Deep, Double Gang Backbox	MMCDGBB32002
44mm Deep, Double Gang Backbox	MMCDGBB44002

Category 6 Patch Cords

	Red	Blue	Green	Yellow	Grey
24 AWG U/UTP - 1.0m	C6CPCU010-111HB	C6CPCU010-444HB	C6CPCU010-555HB	C6CPCU010-666HB	C6CPCU010-888HB
24 AWG U/UTP - 2.0m	C6CPCU020-111HB	C6CPCU020-444HB	C6CPCU020-555HB	C6CPCU020-666HB	C6CPCU020-888HB
24 AWG U/UTP - 3.0m	C6CPCU030-111HB	C6CPCU030-444HB	C6CPCU030-555HB	C6CPCU030-666HB	C6CPCU030-888HB
24 AWG U/UTP - 5.0m	C6CPCU050-111HB	C6CPCU050-444HB	C6CPCU050-555HB	C6CPCU050-666HB	C6CPCU050-888HB
27 AWG S/FTP - 1.0m	C6CPCS010-111HB	C6CPCS010-444HB	C6CPCS010-555HB	C6CPCS010-666HB	C6CPCS010-888HB
27 AWG S/FTP - 2.0m	C6CPCS020-111HB	C6CPCS020-444HB	C6CPCS020-555HB	C6CPCS020-666HB	C6CPCS020-888HB
27 AWG S/FTP - 3.0m	C6CPCS030-111HB	C6CPCS030-444HB	C6CPCS030-555HB	C6CPCS030-666HB	C6CPCS030-888HB
27 AWG S/FTP - 5.0m	C6CPCS050-111HB	C6CPCS050-444HB	C6CPCS050-555HB	C6CPCS050-666HB	C6CPCS050-888HB

**25 YEAR
SYSTEM WARRANTY**
Available for complete structured cabling
systems when installed by an authorised
Brand-Rex partner. Systems must include
Brand-Rex cable, panels, outlets & patch cords.

10GPLUS

U-MEDIAPLUS

CAT6PLUS

GIGAPLUS

VOICE

brand-rex italy
via giovanni da udine, 34
20156 milano
italy

tel: +39 02 3809 3271
fax: +39 02 3809 3275
web: www.brand-rex.com

brand-rex portugal
lagoas park edificio 8 – piso 0
2740-244 porto salvo
portugal

tel: +351 21 421 4133
fax: +351 21 421 4135
web: www.brand-rex.com

brand-rex spain
avenida de la vega, 1
edificio 3. planta 2. oficina 11
28108 alcobendas
madrid
spain

tel: +34 914 905 919
fax: +34 916 573 331
web: www.brand-rex.com

brand-rex germany
bunsenstrasse 5
D-51647
gummersbach
germany

tel: +49 (0) 2261 814176
fax: +49 (0) 2261 807036
web: www.brand-rex.com

**brand-rex central
& eastern europe**
millennium tower
handelskai 94-96
A - 1200 wien
austria

tel: +431 24027 510
fax: +431 24027 66510
web: www.brand-rex.com

brand-rex nordic
månskensvägen 14A
44340 gråbo
sweden

tel: +46 (0) 8 604 8188
fax: +46 (0) 8 604 8188
web: www.brand-rex.com



brand-rex IMEA
PO box 123908
M-3 mezzanine floor
sheikha sana building
sheikh zayed road
al wasl, dubai
tel: +971 4 321 7525
fax: +971 4 321 7535
web: www.brand-rex.com

brand-rex asia pacific
17/F Prosperity Centre
77-81 Container Port Road
Kwai Chung
NT
Hong Kong
tel: (852) 3620 2603
fax: (852) 3621 0018
web: www.brand-rex.com

brand-rex france
120, rue Jean Jaurès
92 300 levallois perret
france
tel: +33 (0) 1 70 98 78 25
fax: +33 (0) 1 70 98 78 36
web: www.brand-rex.com

brand-rex london
72 cannon street
london
EC4N 6AE
united kingdom
tel: +44 (0) 207 489 7631
fax: +44 (0) 207 113 2239
web: www.brand-rex.com

brand-rex head office
viewfield industrial estate
glenrothes, fife
KY6 2RS
united kingdom
tel: +44 (0) 1592 772124
fax: +44 (0) 1592 775314
web: www.brand-rex.com