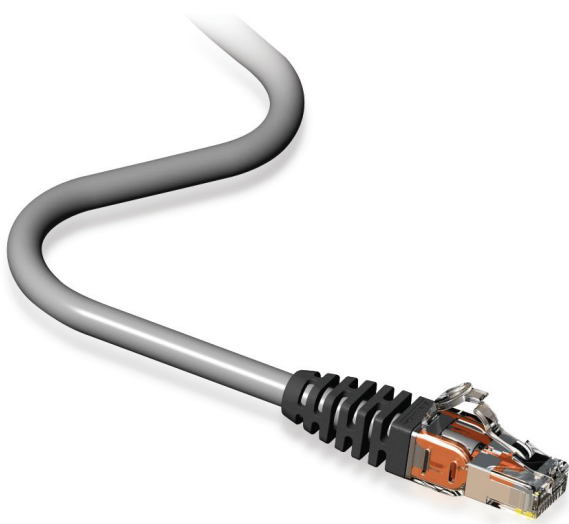




10GPlus Patchcords



- Designed to be compliant with Augmented Cat6 and Class EA Standards when published
- Repeatable, controlled and consistent assembly ensuring optimum performance
- Low Smoke Halogen Free materials as standard
- Available in a variety of lengths
- Backwards compatible to Cat6, Cat5e and designed to be Interoperable with AC6 compliant products
- Low profile boots for higher density blade connectivity
- Flexible and robust construction
- Unique design of wire management throughout the connector length to assure consistent performance
- Performance assessed through rigorous quality control in compliance with the demands of industry standards
- Highest performance and quality level of any RJ45 available on the market
- Suitable for clip-on retrofit coloured boot markers

PRODUCT DESCRIPTION:

The Brand-Rex Augmented Category 6 patchcord is part of the new Brand-Rex 10GPlus cabling system. The 10GPlus cabling system is comprised of high performance cables and connectivity which not only provide a reliable platform for all of today's network applications, but is also designed to future-proof networks for the emerging, new, higher speed protocols of tomorrow, such as 10GBASE-T. The 10GPlus system is classified as an Augmented Category 6 and Class EA product set that is fully backward compatible to Cat6 (Class E) and Cat5e (Class D) products

10GPlus Patchcords

Part Numbering

Description	Part Number	Revision
27 AWG LSOH Patchcord 1m (1.0m)	AC6PCG010-x88HB	B
27 AWG LSOH Patchcord 2m (2.1m)	AC6PCG020-x88HB	B
27 AWG LSOH Patchcord 3m (3.0m)	AC6PCG030-x88HB	B
27 AWG LSOH Patchcord 5m (5.0m)	AC6PCG050-x88HB	B

x = standard range of colours = Red (188), Blue (488), Green (588), Yellow (688) and Grey(888)

Note:- Boots are only available in Slate Grey.

If boot colouring is required, a Retrofit coloured boot clip can be purchased separately.

(Brand-Rex ref:-MMPCCHBz Where z = 1= Red, 4 = Blue 5 = Green 6 =Yellow)

PACKAGING

- Individually packed in branded Easy tear bags
- Individual bagged parts, bulk packed in bags of 10 for standard cord

APPLICATIONS

- Wall & Multi-user Outlets
- Patch Panel & Consolidation Points
- Suitable to connect to Servers, Blade Servers, Hubs and Switches etc

MECHANICAL SPECIFICATIONS

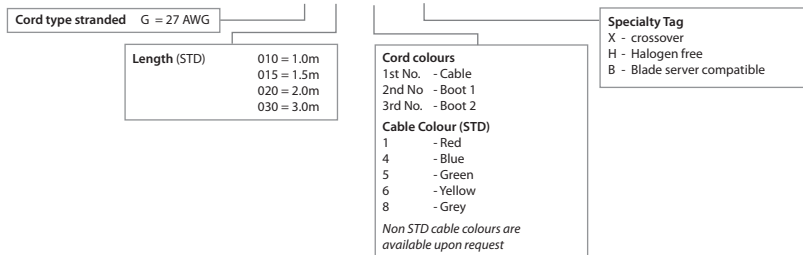
Dimensions

- Nominal Cable Diameter:-Stranded:- 5.8mm
- Length Tolerance :- (bracketed length) ± 1%

ENVIRONMENTAL CONDITIONS

- Operating temperature from 0°C to 50°C at 93% relative humidity, non condensing
- Storage temperature from -20°C to 70°C

PART NO BREAKDOWN AC6PCG020-688HB



The information contained in this document is valid and correct at the time of issue. However, we reserve the right to modify details without notice in the light of subsequent Standard / Specification changes and ongoing technical developments.
© Brand-Rex Limited 2007

Literature Ref: 10GPLUSPC/F/UK/1 11/07

viewfield industrial estate
glenrothes, fife
KY6 2RS
united kingdom

tel: +44 (0) 1592 772124
fax: +44 (0) 1592 775314
web: www.brand-rex.com

